

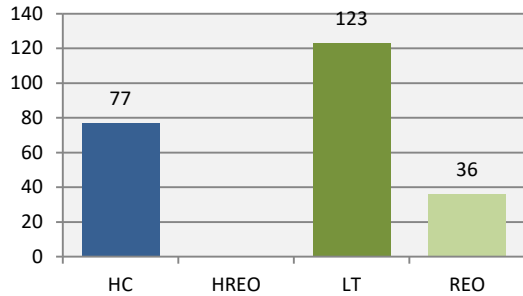
# Statistics and Averages

Range: 01 Jan 2014 - 09 Dec 2021

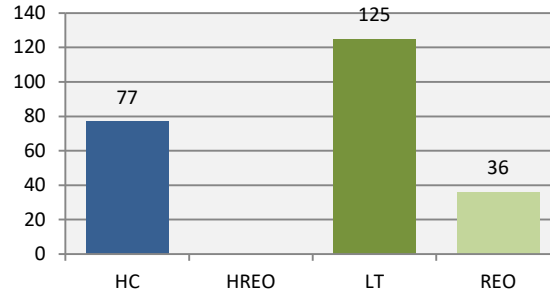
Days are calculated in: Business Days

Hazards are excluded from averages

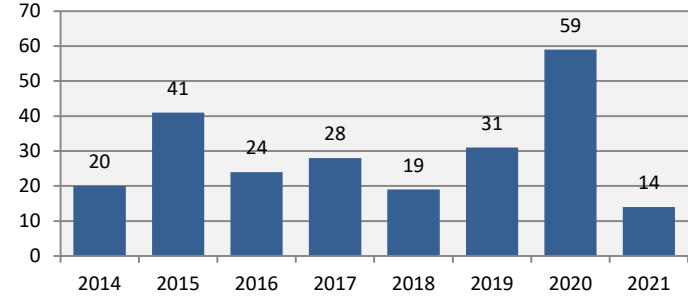
### Total Claims Started in Range



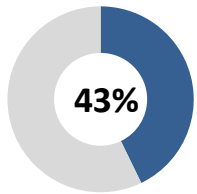
### Active Cases\* in Range



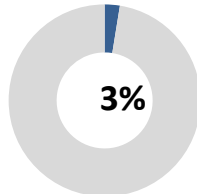
### Claims Started in Range by Year



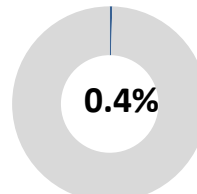
### Claims Closed



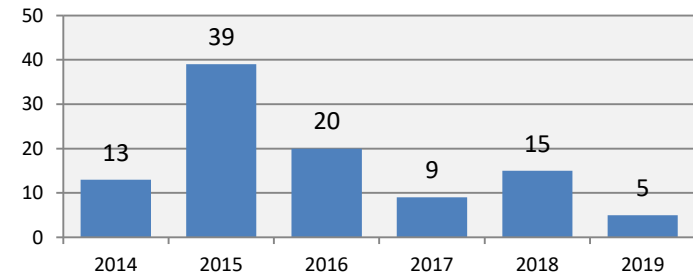
### Ever on Mod. Duties



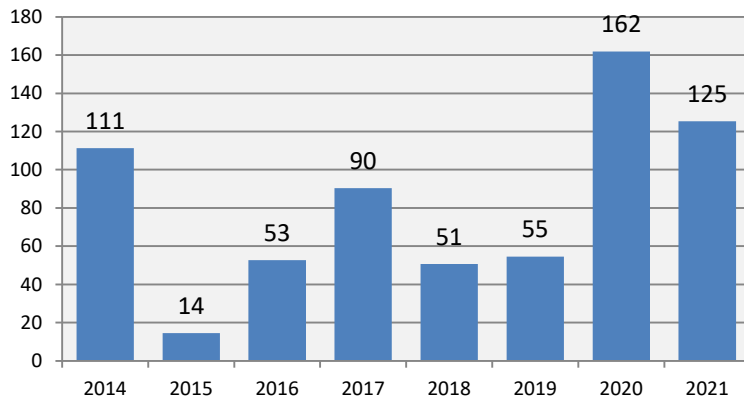
### Currently on Mod. Duties



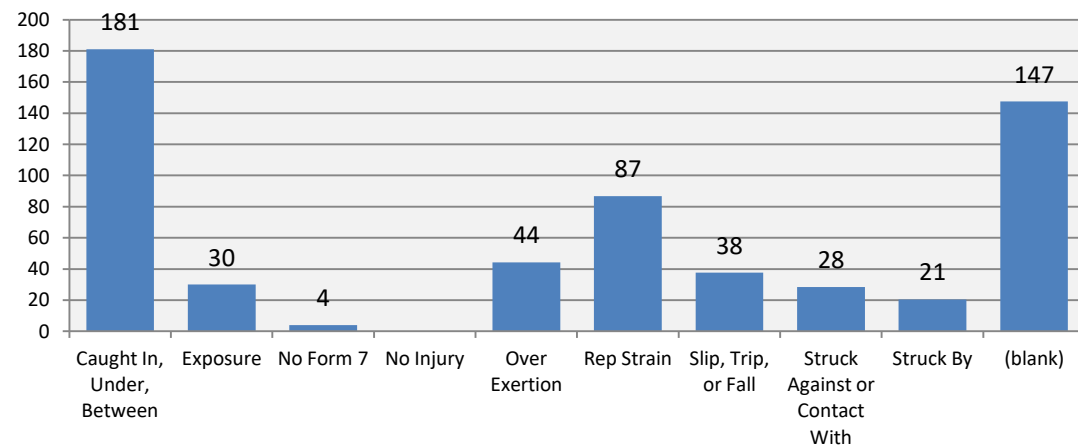
### \*Claims Closed by Year Closed



### Average Days Lost by Year



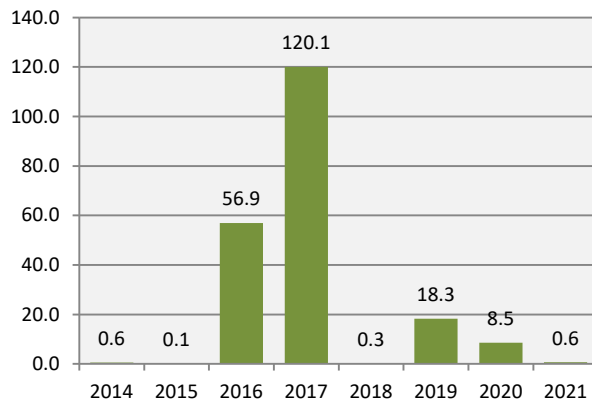
### Averages Days Lost by Type



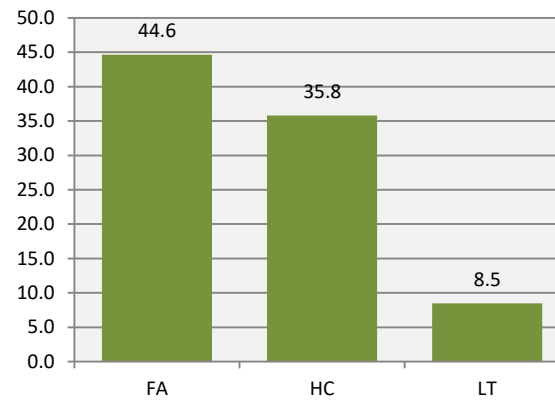
\*includes claims started outside of range, but were active in range

# Statistics and Averages

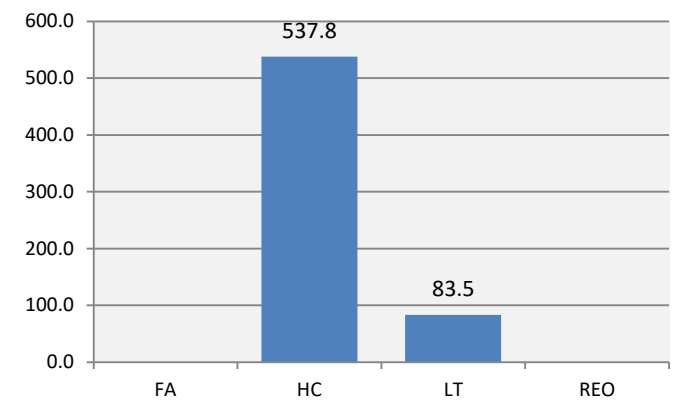
Average #Days to Report Inc by Year



Average #Days to Report Inc by Class

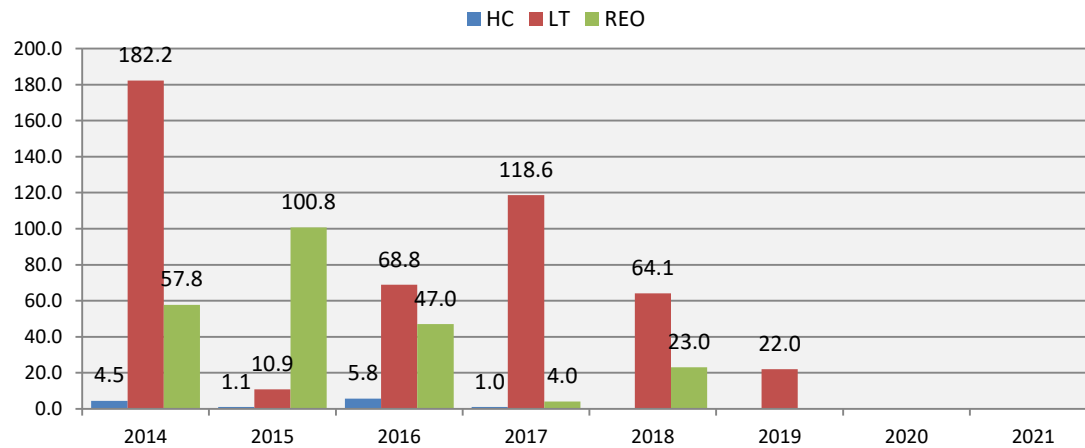


Average #Days on Modified Duties by Class

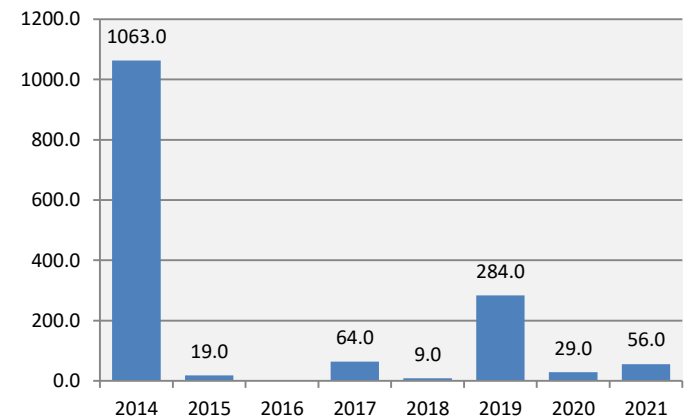


Days to report incidents excludes REOs

Average Length\*\* of Claims by Classification



Average # Days on Modified Duties by Year



\*\* # days btwn Inc Date and Closed Date

## Statistics and Averages

**Health Care and Lost Time Claims Only (excludes REOs)**

Classification (Multiple Items)

Claims In Range (Multiple Items)

Incident Type	Values										
	# of Incidents in Range	# of Corrective Actions	# of Completed Corrective Actions	# of Outstanding Corrective Actions	Total of WCB Costs	Average WCB Costs/Claim	Average # of Days to Report	Average # of Days Btwn Inc Date and Entry Date	# of Claims Placed on Modified Duties	# of Claims Completed Modified	Average Days on Modified Work
Caught In, Under, Between	12	13	11	2	\$80,046.15	\$6,670.51	97.3	28.9			
Exposure	17	6	3	3	\$20,506.50	\$1,206.26	0.0	4.7			
No Form 7	1	3	3	0	\$1,497.56	\$1,497.56	0.0	2.0	1	1	2
No Injury	1	0	0	0	\$200.00	\$200.00	0.0	265.0			
Over Exertion	63	29	7	22	\$445,679.60	\$7,074.28	24.7	23.9	3	2	214
Rep Strain	6	0	0	0	\$131,307.80	\$21,884.63	0.2	54.5	1	1	9
Slip, Trip, or Fall	16	12	6	6	\$98,879.63	\$6,179.98	0.1	17.3	3	1	718
Struck Against or Contact With	22	17	7	10	\$115,073.47	\$5,230.61	0.0	25.8	1	1	159
Struck By	27	9	2	7	\$52,626.00	\$1,949.11	0.1	11.1	1	1	9
(blank)	35	3	2	1	\$435,673.21	\$12,447.81	30.1	392.6	5	4	19
<b>Grand Total</b>	<b>200</b>	<b>92</b>	<b>41</b>	<b>51</b>	<b>\$1,381,489.92</b>	<b>\$6,907.45</b>	<b>19.0</b>	<b>87.1</b>	<b>15</b>	<b>11</b>	<b>205</b>

## Statistics and Averages

### Lost time Claims Only

Classification LT  
Claims In Range (Multiple Items)

Incident Type	Values									
	# of Incidents in Range	# of Completed Corrective Actions	# of Outstanding Corrective Actions	Average Days Lost	Average of Days Lost up to Threshold	WCB Costs Total for Range	Average WCB Costs/ Claim	# of Claims Placed on Mod Duties	# of Claims Returned from Mod Duties	Average Days on Modified Work
Caught In, Under, Between Exposure	7	11	1	230.6	9.9	\$79,753.65	\$11,393.38			
No Form 7	3	0	1	30.0	9.0	\$19,659.00	\$6,553.00			
No Injury	1	3	0	4.0	4.0	\$1,497.56	\$1,497.56	1	1	2
Over Exertion	1	0	0			\$200.00	\$200.00			
Rep Strain	42	5	18	48.6	10.4	\$436,525.10	\$10,393.45	2	1	312
Slip, Trip, or Fall	6	0	0	86.8	15.8	\$131,307.80	\$21,884.63	1	1	9
Struck Against or Contact With	11	1	6	40.6	15.8	\$91,662.43	\$8,332.95	1	1	21
Struck By	13	2	10	30.4	13.1	\$114,694.72	\$8,822.67	1	1	159
(blank)	14	2	6	20.5	8.9	\$50,771.75	\$3,626.55	1	1	9
	25	2	0	229.8	20.0	\$335,926.43	\$13,437.06	4	3	24
<b>Grand Total</b>	<b>123</b>	<b>26</b>	<b>42</b>	<b>70.4</b>	<b>12.1</b>	<b>\$1,261,998.44</b>	<b>\$10,260.15</b>	<b>11</b>	<b>9</b>	<b>83</b>

## Statistics and Averages

**Data Excludes Hazards and REOs**

Classification (Multiple Items)  
 Claims In Range (Multiple Items)

Year	Values							
	Total Incidents	Total of WCB Costs	Average of # days between Date of Inc and Date Reported	Average of # days between Reported Date and Date Entered	Average of Total Days on Modified	Total # of Corrective Actions	# of Completed Corrective Actions	% Completed Corrective Actions
2014	16	\$102,108.74	0.6	16.0	1063	9	4	44.4%
2015	40	\$51,983.03	0.1	4.8	19	17	1	5.9%
2016	30	\$153,145.50	56.9	544.9		6	1	16.7%
2017	20	\$344,740.72	120.1	379.4	64	11	3	27.3%
2018	16	\$212,312.05	0.3	6.8	9	10	3	30.0%
2019	29	\$59,762.25	18.3	13.4	284	11	4	36.4%
2020	59	\$438,148.99	8.5	240.6	29	10	8	80.0%
2021	29	\$19,288.64	0.6	2914.3	56	18	17	94.4%
<b>Grand Total</b>	<b>239</b>	<b>\$1,381,489.92</b>	<b>21.8</b>	<b>517.1</b>	<b>205</b>	<b>92</b>	<b>41</b>	<b>44.6%</b>